



Imperial Slate
glazed ceramic tile

Imperial Slate

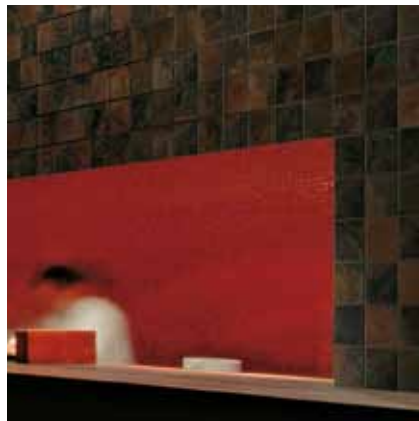
Black-Mix



A surface texture like slabs riven from prehistoric Indian mountains – scratched, split, robust – with rich, layered colorations of ocher, olive, black, brown, cotto, cream and rust crown this warm slate look.

The fusion of organic colors and clefts vary significantly from piece to piece and readily complement diverse design elements, either rustic or contemporary, in residential or commercial settings.

Wall: Imperial Mix 6"x6"



Floor: Imperial Black 12"x12"



Floor: Imperial Black 12"x12" Wall: Imperial Mix 6"x6"



Imperial Slate Tan-Rust-Mix



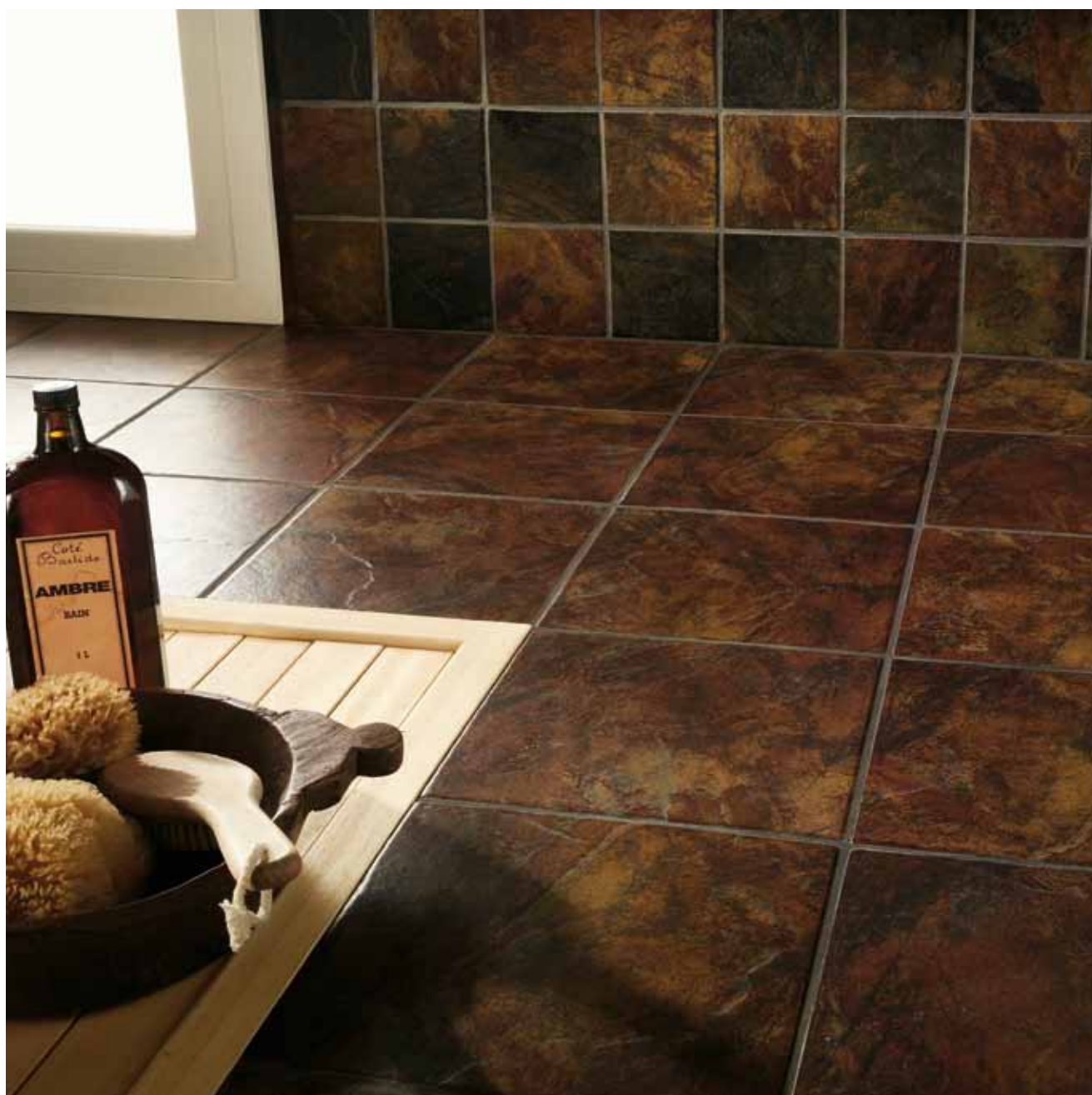
Resplendent layers of color and texture excite the senses while the glazed surface eliminates the flaking and maintenance routines associated with natural slate.

Floor: Imperial Tan 12"x12"





Floor: Imperial Rust 12"x12" Wall: Imperial Mix 6"x6"



Imperial Slate

floor and wall tile - glazed ceramic tile



Imperial Tan



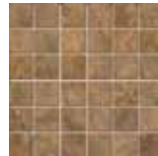
Imperial Rust



UF4R Imperial Tan
16"x16"



UE26 Imperial Tan
12"x12"



ULBG Imperial Tan
Mosaic - Square 2"x2"
12"x12"

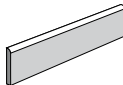


UF4Q Imperial Rust
16"x16"

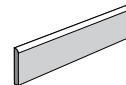


UE25 Imperial Rust
12"x12"

Trims



UH6B Imperial Tan
Bullnose
3"x12"



UH6A Imperial Rust
Bullnose
3"x12"

ASTM Test Results

Technical Characteristics	ASTM Standards	ASTM Test Results	ASTM Test Methods
Water Absorption	2% to 5%	2% to 5%	C373
Frost Resistance	As Reported	Resistant	C1026
Scratch Resistance	MOHS 1-10	7	MOHS Scale
Breaking Strength	≥ 250 lbf.	≥ 370 lbf.	C648
Facial Dimension	-3.0% < Nominal ≤ 3.0%	Within Standard	C499
Thickness	≤ 0.04 in (1.02 mm max)	Within Standard	C499
Wedging (squareness)	+/- 0.50% or +/- 2.0mm**	Within Standard	C502
Warpage (flatness)	+/- 0.75% or +/- 2.3mm**	Within Standard	C485
Abrasion Resistance	Class 0 - Class V	Class IV*	C1027
Dry Coefficient of Friction	As Reported	0.70 ≤ C.O.F. < 0.80	C1028
Wet Coefficient of Friction	As Reported	0.60 ≤ C.O.F. < 0.70	C1028
Chemical Resistance	Class A - Class E	Class A	C650
Stain Resistance	Class A - Class E	Class A	C1378

* Abrasion Resistance / Suggested Applications

Class IV: Tile in this class may withstand heavier amounts of traffic with greater amounts of dirt and/or other abrasives present, including commercial kitchens, and areas with regular traffic from the outside. See Coefficient of Friction and Frost Resistance for installation-specific details.

** Whichever is less



Field Tile



Wall Tile



Modular Tile



Decorative Tile



Trim Available



Substantial Variation



Frost Resistant



Meets ADA Recommendations



Abrasion Resistance



C.O.F. (Wet)



C.O.F. (Dry)



7% Minimum Pre-Consumer Recycled Content



Certified No VOC



Contributes to
LEED Credits



Imperial Black



Imperial Mix*



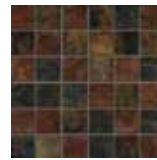
UF4P Imperial Black
16"x16"



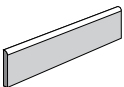
UE24 Imperial Black
12"x12"



UE3P Imperial Mix*
6"x6"





ULBH Imperial Mix
Mosaic - Square 2"x2"
12"x12"



UH59 Imperial Black
Bullnose
3"x12"

* Imperial Mix Color is a combination of the Imperial Black and Imperial Rust. Tile is randomly packaged and has extreme shade variation.

	Sizes	Pcs	Sq. Ft.	Weight (lbs.)	Thickness
Modular Tile	6" x 6"	40	9.70	35	0.335
Floor Tile	12" x 12"	15	14.53	51	0.335
Floor Tile	16" x 16"	8	13.78	54	0.354
Mosaic - Square 2"x2"	12" x 12"	10		39	Compatible
Bullnose	3" x 12"	20		21	Compatible

	Sizes	Ctn	Sq. Ft.	Weight (lbs.)
Modular Tile	6" x 6"	80	776.00	2800
Floor Tile	12" x 12"	48	697.44	2448
Floor Tile	16" x 16"	32	440.96	1728



American Marazzi Tile, Inc.
Headquarters & Manufacturing Plant

359 Clay Road
Sunnyvale, Texas 75182

Telephone
972.226.0110
Fax
972.226.5629

www.marazzitile.com
contact@marazzitile.com

IMPERIAL SLATE is available nationwide.
To locate your nearest Distributor call
American Marazzi Tile Customer Service
or visit www.marazzitile.com

DISTRIBUTED BY:

Color and other aesthetic features shown are as close as the limitation of the printing process will allow. We have tried to make this brochure as comprehensive and factual as possible. We reserve the right, however, to make changes at any time, without notice, in colors, materials, packaging, specifications and availability. Since some information may have been updated since time of printing, please check with American Marazzi Tile Customer Service for details.