



AVENUE ONE™

  
AMERICAN OLEAN™  




Photos feature Avenue One Sidewalk 18" x 18" on the floor and Legacy Glass Celedon 1" x 1" Mosaic shown on the wall.  
Cover photo features Avenue One Midnight Sky 12" x 12" on the floor, Midnight Sky 1/2" x 6" Mosaic and  
Blackout/Municipal Gray 2" x 12" Decorative Accent on the wall.

# AVENUE ONE

THERE'S BEEN AN EVOLUTION.  
PERHAPS EVEN A REVOLUTION,  
IN THE MINIMALISTIC WORLD  
OF STAINED CONCRETE.



# a fashionable new twist on stained concrete

Echoing the distinctive style that's had such appeal in residential and commercial designs, Avenue One is a porcelain tile that provides a clean, neutral look with a more refined twist.

This remarkable ColorBody™ porcelain tile delivers the modern, minimalist aesthetic thanks to a unique brushed finish and truly striking color treatments with the characteristic movement of stained concrete.

Available in ten matte-finish colors like Sidewalk, Coffee Shop, Municipal Gray and Nightlife, Avenue One is an extremely flexible high-fashion tile. Because it presents both urban character and a contemporary appeal, it works wonders in a wide range of applications.



sleek  
choices



LOFTY STYLES





# the loft look is moving uptown

The street smarts and modern style of Avenue One come in four field tile sizes, plus a dynamic mosaic and fully-modular trim package which can lead to some very stimulating patterns. Finishing pieces such as a bullnose, cove base and cove corner are also available in all colors. And a mesh-mounted linear accent, intermingling field tile with metallic and glass finishes, might be just the kind of decorative touch that completes a commercial or residential application.

Just imagine the possibilities presented by this highly evolved cement-like visual. Better yet, head downtown, grab a cup of coffee and let your mind wander through the incredible sources of inspiration the city presents with such frequency.

Photos feature Avenue One Designer Leather 24" x 24", 12" x 24" and 12" x 12".



FIELD TILE



Streetlamp AU01



Sidewalk AU02



Playground Sand AU03



Brownstone AU04



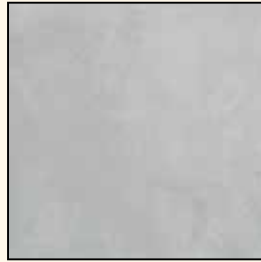
Coffee Shop AU05



Designer Leather AU06



Midnight Sky AU07



Municipal Gray AU08



Nightlife AU09



Blackout AU10

MOSAIC TILE



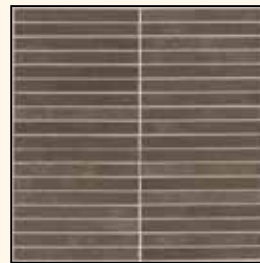
Streetlamp AU01



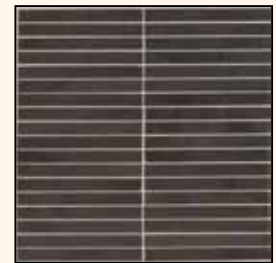
Sidewalk AU02



Playground Sand AU03



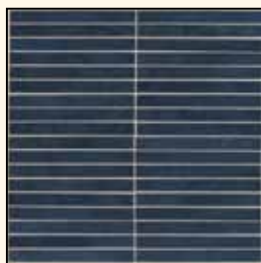
Brownstone AU04



Coffee Shop AU05



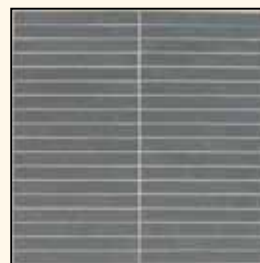
Designer Leather AU06



Midnight Sky AU07



Municipal Gray AU08



Nightlife AU09

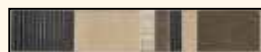


Blackout AU10

DECORATIVE ACCENT



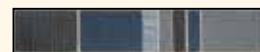
Streetlamp/Sidewalk AU15



Brownstone/Playground Sand AU16



Coffee Shop/Designer Leather AU17



Nightlife/Midnight Sky AU18

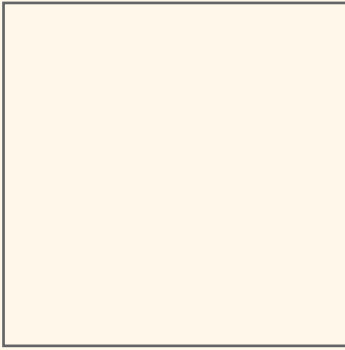


Blackout/Municipal Gray AU19



COLOR

## SIZES



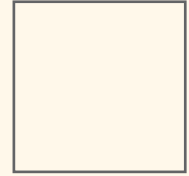
**24" x 24" Field Tile**  
(23 1/2" x 23 1/2" nominal)  
(59.8 cm x 59.8 cm nominal)



**18" x 18" Field Tile**  
(17 5/8" x 17 5/8" nominal)  
(44.7 cm x 44.7 cm nominal)



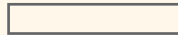
**12" x 24" Field Tile**  
(11 3/4" x 23 1/2" nominal)  
(29.8 cm x 59.8 cm nominal)



**12" x 12" Field Tile**  
(11 3/4" x 11 3/4" nominal)  
(29.8 cm x 29.8 cm nominal)



**1/2" x 6" Mosaic**  
(11 3/4" x 11 3/4" sheet nominal)  
(29.8 cm x 29.8 cm sheet nominal)



**2" x 12" Decorative Accent**  
(1 7/8" x 11 3/4" nominal)  
(4.8 cm x 29.8 cm nominal)



Each floor tile is rectified which allows for the use of smaller grout joints.

Tile Thickness: 3/8"

## SHADE VARIATION



Medium (V2)

## TRIM



**Bullnose S43C9**  
3" x 12"



**Cove Base S36C9T**  
6" x 12"



**Cove Base Corner SC36C9T**  
1" x 6"

	TILE
C.O.F Wet	≥0.60
C.O.F Dry	≥0.70
Moisture Absorption	<0.5%
Breaking Strength	>450 lbs.
MOH's	8
Chemical Resistance	Resistant

For more information on Test Results and Classifications, visit us at [www.americanolean.com/TestResults](http://www.americanolean.com/TestResults).

APPLICATIONS

	Residential	Light Commercial	Commercial
Floors †	<input checked="" type="checkbox"/>	<input checked="" type="checkbox"/>	<input checked="" type="checkbox"/>
Walls/Backsplashes	<input checked="" type="checkbox"/>	<input checked="" type="checkbox"/>	<input checked="" type="checkbox"/>
Countertops	<input checked="" type="checkbox"/>	<input checked="" type="checkbox"/>	<input checked="" type="checkbox"/>
Pool Linings	<input checked="" type="checkbox"/>	<input checked="" type="checkbox"/>	<input checked="" type="checkbox"/>

† Water, oil, grease, etc. create slippery conditions. Floor applications with exposure to these conditions require extra caution in product selection and proper maintenance.

For additional information, refer to "Factors to Consider" at [www.americanolean.com/ResidentialFactors](http://www.americanolean.com/ResidentialFactors)

- Suitable for exterior walls in freezing and non-freezing climates when proper installation methods are followed
- Not for use on ramps

CLEANING PROCEDURES

- Remove loose dust and dirt with a damp cloth or sponge
- Use a neutral, non-abrasive cleaner suitable for ceramic tile
- Remove cleaning solution with a clean, damp sponge or mop

INSTALLATION METHODS

BACKING MATERIALS

- Concrete
- Mortar bed
- Cementitious backer board

SETTING

- Latex modified thin-set
- Epoxy

GROUTING

- Sanded grout
- Sanded cement grout
- Epoxy grout
- Recommended grout joint: 1/16", 1/8" when used in a modular pattern

Note:

- Since there are variations in all fired ceramic products, the tile and trim supplied for your particular installation may not match these samples. Final selection should be made from actual tiles and trim and not from tile and trim samples or color reproductions.
- For proper bonding, medium bed mortar should be utilized in installing tiles with a dimensional length size greater than 20" x 20", large rectangles or tiles with greater dimensional thickness than normal. Back buttering tiles of this nature in the installation process will also assure proper coverage for bonding.



stylish



© 2008 American Olean  
[americanolean.com](http://americanolean.com)  
CSAOAVEONE

  
AMERICAN OLEAN™  
